



Aparima College Newsletter

Issue: ISSUE THREE: MAY 2022



Aparima College
33 Leader Street
Riverton 9822
Telephone: 03 2348 900

Email: office@aparima.school.nz

Website: www.aparima.school.nz

Facebook:
www.facebook.com/aparimacollegenz/

Nāu te rourou, nāku te rourou, ka ora ai te iwi

(With your food basket and my food basket the people will thrive)

Kia ora koutou e te whānau,

Another exciting week at school. It is great to see sports starting up again and students getting involved. I was particularly heartened the other day whilst walking with a student who has started playing rugby saying "I have never been in a school team before, now I am, it feels good". I think it highlights the importance of sports in helping students develop a sense of pride and belonging to school. I am looking forward to going to games and seeing our students representing and enjoying themselves.

With the Covid wave seemingly flattening out, we are back to more regular routines with attendance. Regular attendance is crucial for students' achievement and enjoyment of school. We continue to follow up on poor attendance, our role is to support your child in attending school and if you are having difficulties, please do not hesitate to contact us and we can work together to ensure the highest possible attendance for your child.

Last week I met with the PTA and the Runaka, as a new Principal it is exciting to hear some voice from the community and to share thoughts and ideas of how to grow, not only the school but the community.

On Friday we will have one of our Accord Teacher Only Days. Friday's focus will be on the Literacy and Numeracy Co-requisites. These will be introduced in 2023 as a part of the changes to NCEA. Students will be able to achieve their Co-requisites from year 9 onwards. Co-requisites do not carry any credits but students will not be able to achieve NCEA without them. They will be the foundation of literacy and numeracy and will be cross curricular.

"Tāraia te mahara, ka tāraia ai te rākau"
Carve the mind before carving your path

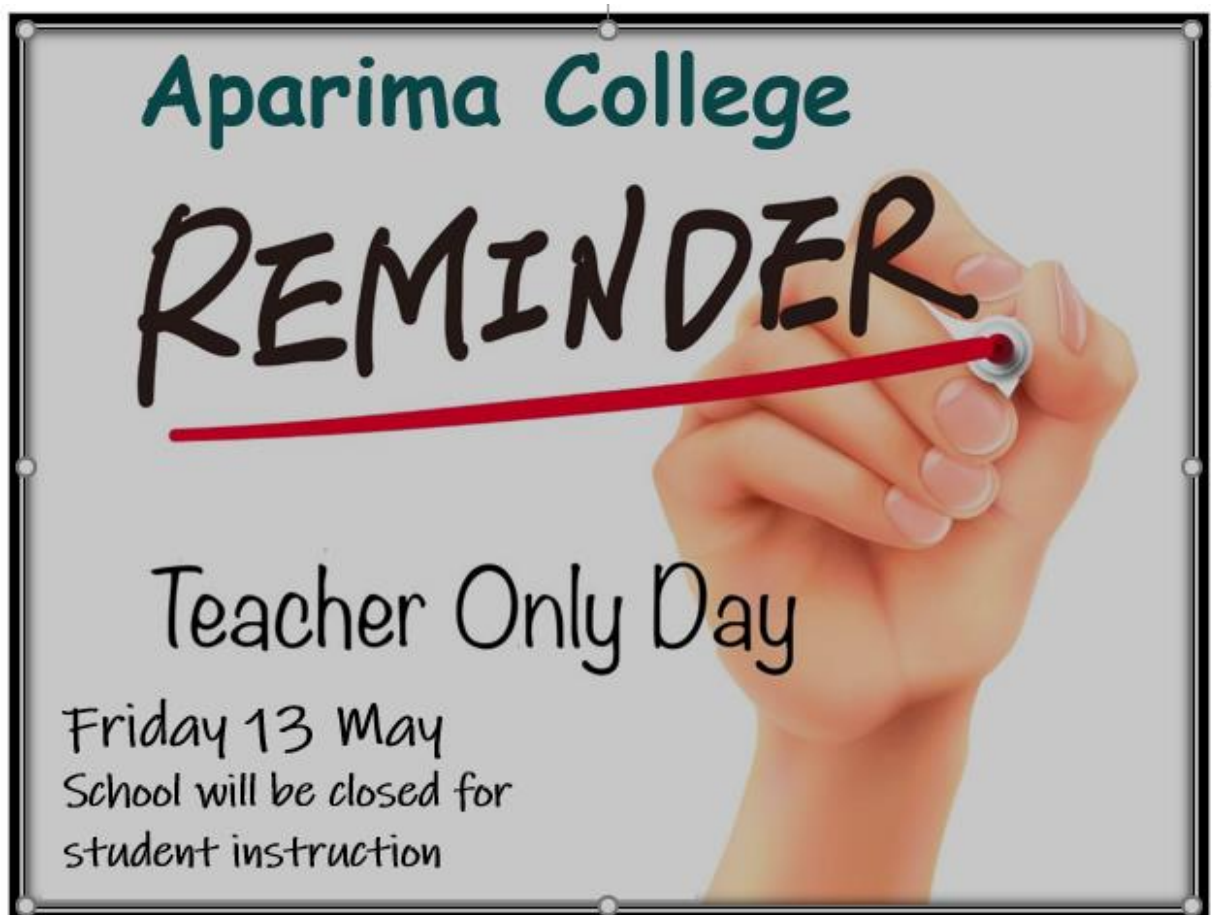
Ngā manaakitanga,
Aloma

Entrance to Aparima College

We are currently looking at the entrance into Aparima College. One idea is to develop an entrance way on the corner that is currently closed off by the school sign.

Our understanding is that the current “well structure” and school name was built to frame the original bricks from the original school building. We are proposing that the original bricks be preserved with the structure framing them removed and replaced with something that represents the history and future aspirations of Aparima College.

If you know the history of this structure or have any objections to this proposal, please email the school office office@apariama.school.nz



Year 10C Study

As part of 10C's study of the novel 'The Absolutely True Diary of a Part-time Indian', teacher aide Renea Fluerty brought in her Native Indian talking stick and explained its meaning to the class. Later in the lesson, the students trialed using a 'talking stick' themselves by taking it in turns to speak on an important topic while everyone else listened respectfully.



Ball Season is coming up.....

Ball season is approaching and we the team at Fredricks Menswear would like to offer our students their experience with preparations for dressing for the ball, plus a 10% discount on purchases for the event.

We would like to extend the offer also to the teaching crew. Please come in and see us today.

Kindest regards

The Team Fredricks Menswear

FREDRICKS
MEN OF FASHION

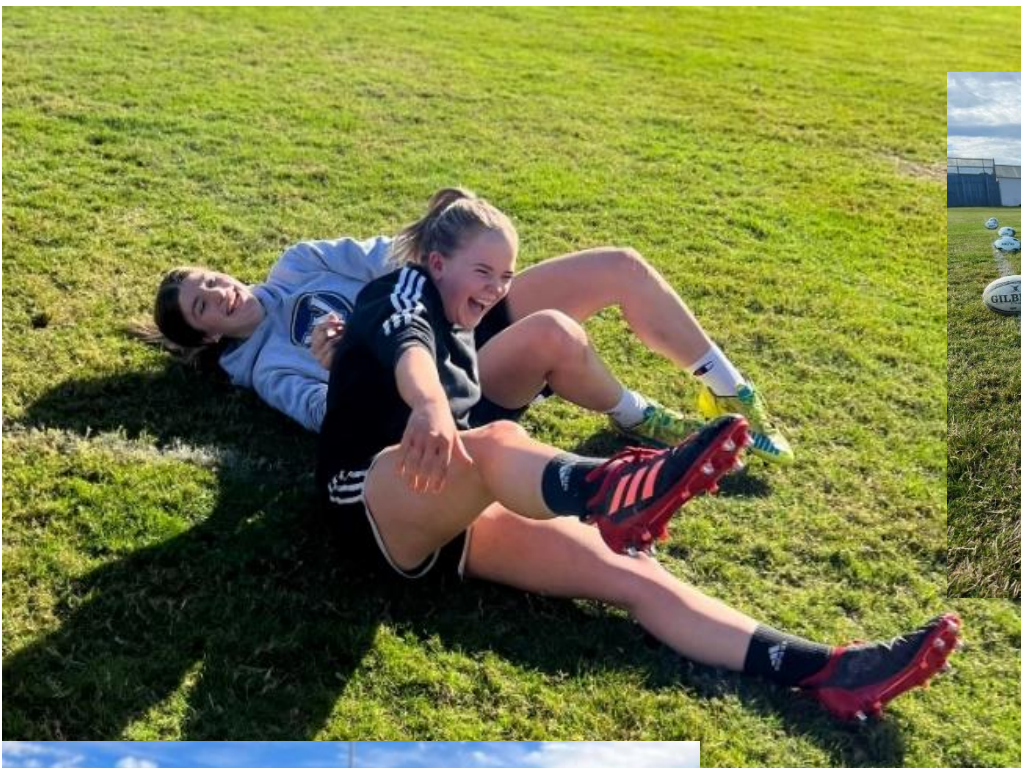
BALL SEASON

CREATE YOUR LOOK WITH THE TEAM OF FASHIONISTAS
RECEIVE KNOWLEDGE, DIRECTION AND STYLE
PLUS 10%DISCOUNT

WE TAKE THE TORTURE OUT OF SHOPPING
LAYBY OPTION AVAILABLE
113 DEE ST 2186092 LIKE US ON FACEBOOK

Girls Rugby has started at Aparima College

We introduce a Girl's Year 9/10 - 10 Aside rugby team who are busy behind the scenes training to play on Mondays afterschool this is part of the Rugby Southland Girls development programme.



Year 9 Māori

Some fun pictures from Yr 9 Māori class recently, they are playing a rākau game called Māui Matau.



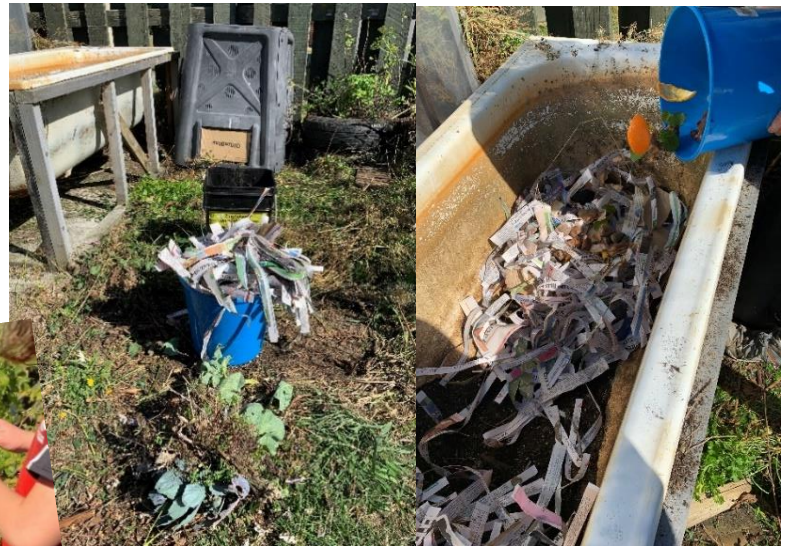
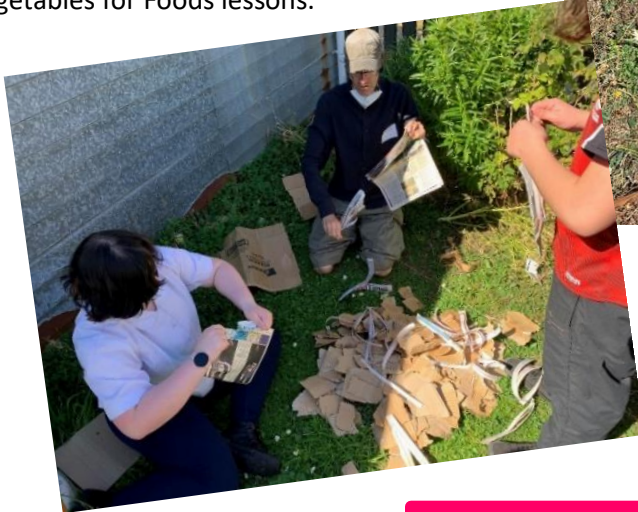
Reminder Parent Teacher Interviews

Wednesday 18 May 2022 from 2:00pm –
6:20pm – Don't forget to book your interview
before 3:00pm Friday 13 May 2022.
Check your email for more details



Our Worm Farm

This afternoon, the Gardens Elective students participated in creating a worm farm in the Small Garden, guided by Nick Kiddey from the Environment Centre. We aim to use vegetable scraps from Foods lessons to 'feed' the worms, and then collect 'worm tea' to fertilise the garden beds and grow more herbs and vegetables for Foods lessons.



APARIMA COLLEGE

PINK SHIRT DAY

FRIDAY 20TH MAY

ROCK ANYTHING **PINK** TO SCHOOL!
NO DONATIONS JUST A WEEK FULL OF
ACTIVITIES!

A BAKE SALE WILL BE IN FRONT OF THE
COMMON ROOM @ LUNCHTIME ON THE **FRIDAY**
ONLY!!

***SPEAK UP, STAND TOGETHER, STOP
BULLYING***

**KORERO MAI, KORERO ATU, MAURI TU, MAURI
ORA**



A Visitor to the College

Last term Mr Whippy visited our students and staff on the last day of term, a great treat for a hard term dealing with so many students and staff away due to Covid.



Cross Country

Last week we held our cross country with awesome weather with Caleb Diprose coming in 1st and competing the course in 18 minutes. Good luck to Caleb Diprose, Ryan Diprose and Brody Murdoch who will represent the College at the Southland Secondary School X Country competition in Te Anau. **BREAKING NEWS** We have just received word that Caleb Diprose was placed 3rd in the U16 Southland Secondary Schools Cross Country yesterday in Te Anau. Also well done to Logan Murdoch who came in 7th. Well done to both these boys.



Messages to Students

If you wish to leave a message for your child, this must be phoned through to the College office by 11:30 am. We cannot promise that messages will get to your child if left after 12 noon.

Leaving the College Grounds

All students who leave the college during the day **MUST** have permission from the school as well as their parents/caregivers contacting the college office to advise a reason for leaving. The students **MUST** sign out through the office. Late students and those returning to the college **MUST** sign in at the office. Exeat passes are available to town students who wish to go HOME ONLY FOR LUNCH on a regular basis. **Reminder to Senior students – if you wish to drive a vehicle to school you must collect a permission form from the office and get this signed by a parent/caregiver and return to the office. Note that you need to bring your driver's licence to the office to be copied. (A new form needs to be filled in every year so although you did this last year you need to do it again this year).**

Reminders

- Face Masks are required for all students and staff whilst indoors at school.
- Face masks must be worn on school transport.
- No non-essential visitors on site
- Visitors must scan in and wear a facemask
- If your child has an exemption from wearing a mask, please let the office know and we can inform your child's teachers.



Reminder - Attendance

Students should ensure they are at school and in their Form Class by 8:40am and leave by 3:00 pm unless otherwise indicated. If your son or daughter is absent, please contact us by 9:00 am on the day of the absence, with your child's name, reason for the absence and the name of the person phoning in. Absences can also be put through using the Kamar app on your phone. Any problems accessing this app please contact the College office. Automatic texts will be sent to parents/caregivers for unexplained absences. Students arriving late **MUST** sign in at the office when they arrive.

UP AND COMING EVENTS

2022

13 May 2022	Teacher Only Day
18 May 2022	Parent Teacher Interviews
20 May 2022	Pink Shirt Day
20 May 2022	Futsal House Competition
24 May 2022	House Quiz Competition
13 June 2022	BOT Meeting 6pm
4 July 2022	BOT Meeting 6pm
6 July 2022	Career Speed Info afternoon

COMMUNITY EVENTS



COME INTO YOUR LIBRARY AND TAKE THE BRICK CLUB CHALLENGE!

BUILD SOMETHING FANTASTIC INSIDE THE TIME LIMIT.

MONDAY

FORTNIGHTLY **OTAUTAU**
FORTNIGHTLY **LUMSDEN**

3.15PM - 4.15PM
3.00PM - 4.00PM

TUESDAY

WEEKLY **WYNDHAM**

3.15PM - 4.15PM

WEDNESDAY

WEEKLY **RIVERTON**
WEEKLY **TE ANAU**

3.05PM - 4.05PM
3.15PM - 4.00PM

THURSDAY

FORTNIGHTLY **WINTON**

2.45PM - 3.45PM

